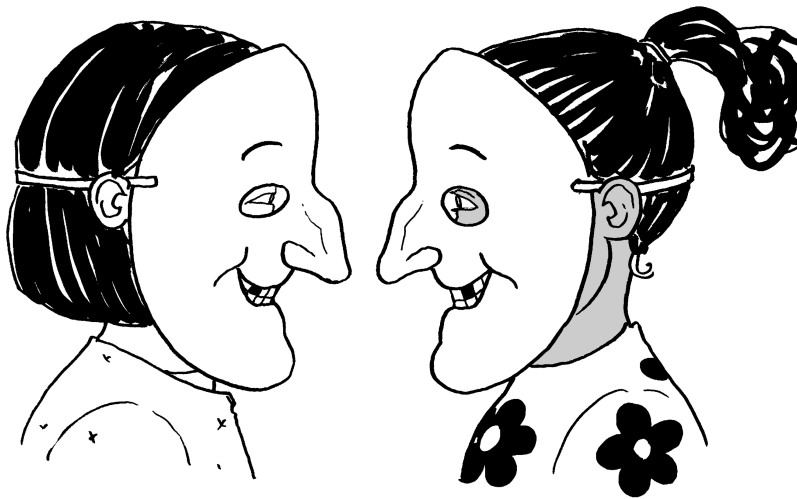


## Which Witch?





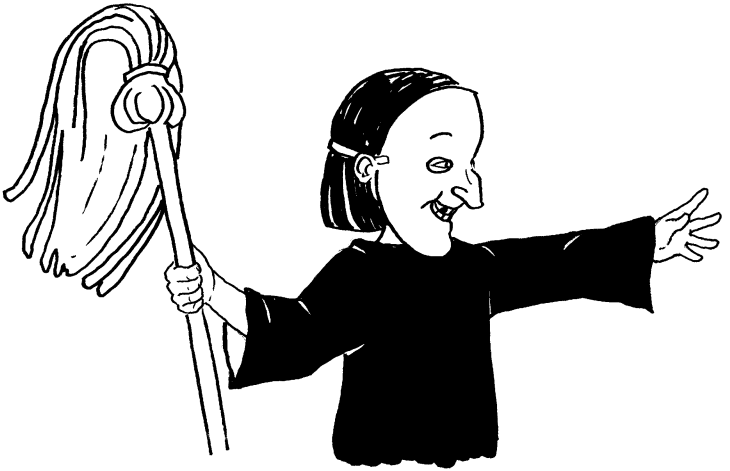
Liz and Ann have put on  
masks. They both look  
like witches.



They both have black dresses. Liz and Ann both have black hats.



Which witch is Liz? Which one is Ann? People can't tell which is which.



All they see are two witches  
with two mops. Mops?  
Witches do not fly on mops.



Why do Liz and Ann  
have mops? Well, I will  
tell you why.



When people spill some  
milk, the two witches  
mop up the mess.

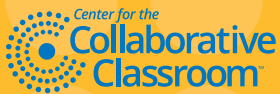


When there is mud on  
the steps, they come  
and mop up that mess.





Ann and Liz are good  
witches. They do not fly  
up in the sky on brooms.



A component of **SIPPS**® Beginning Level

ISBN 978-1-61003-484-5



SP54-LB52